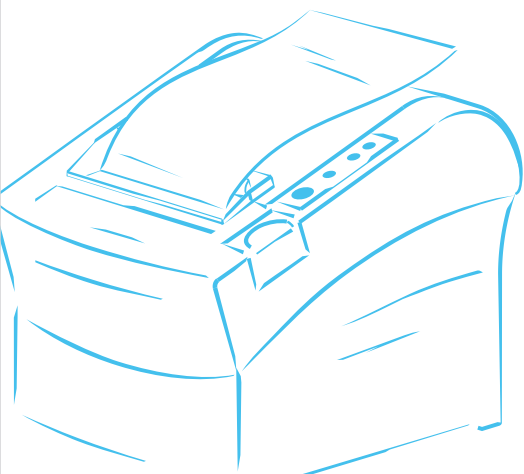


Adding IP port

(for printer with lan interface)



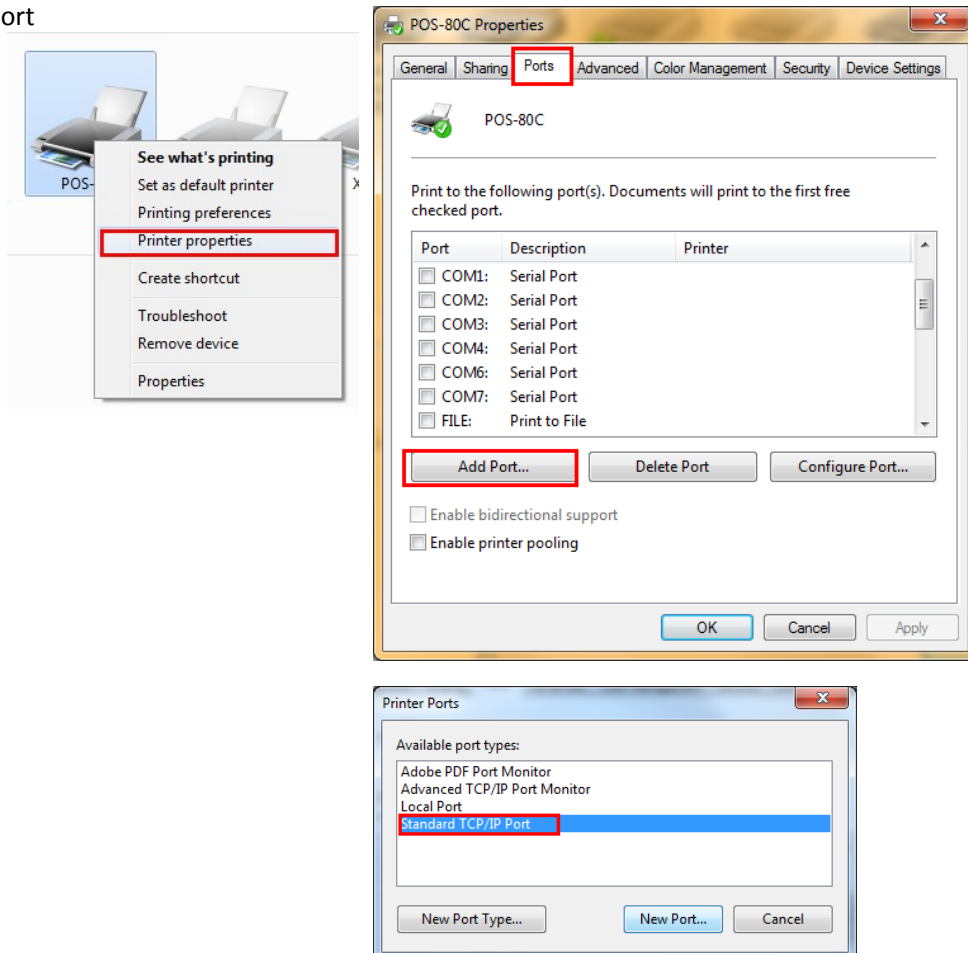
Adding IP port(for printer with Lan interface)

After printer driver is installed, printer with Lan interface needs to add IP port, the specific operation is as below

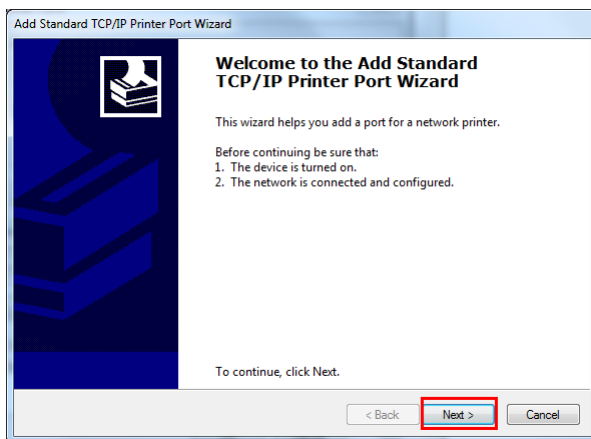
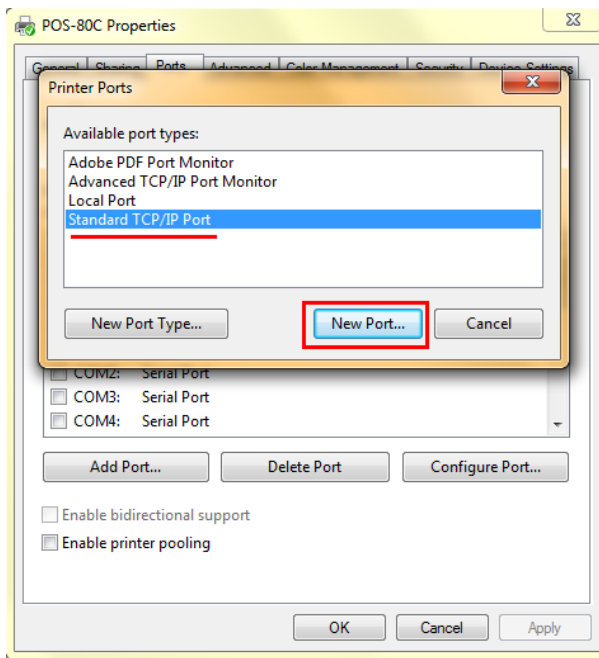
1、 Find out the installed driver icon (POS-80C):



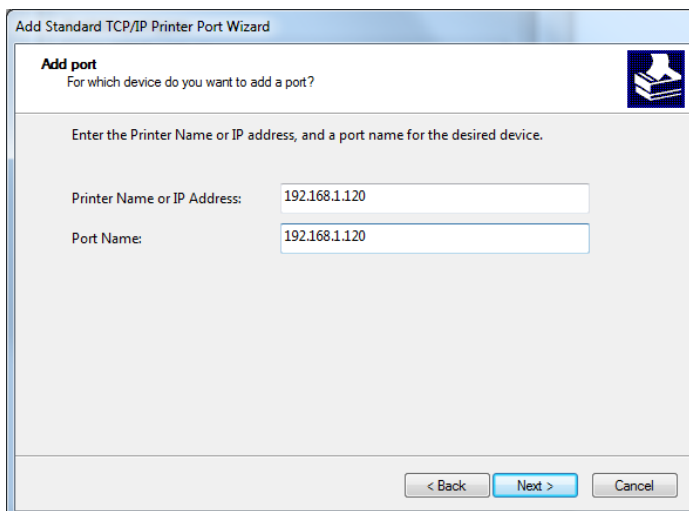
2、 Click the right button of POS-80C--Printer properties--Port--Add port--Select Standard TCP/IP port



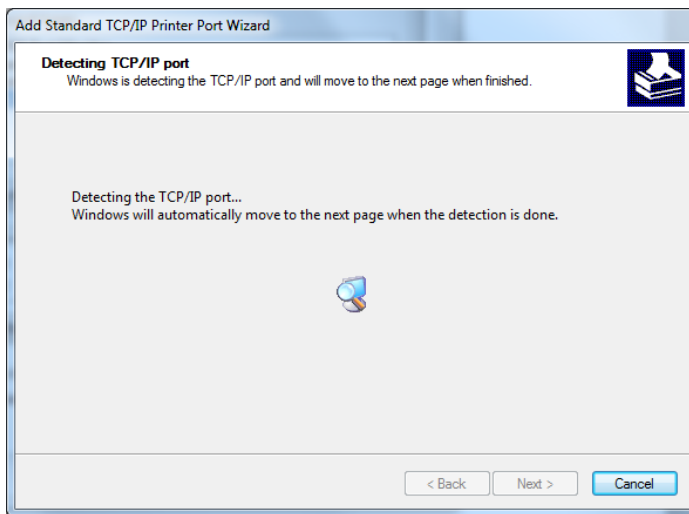
3、 Select New Port, then next



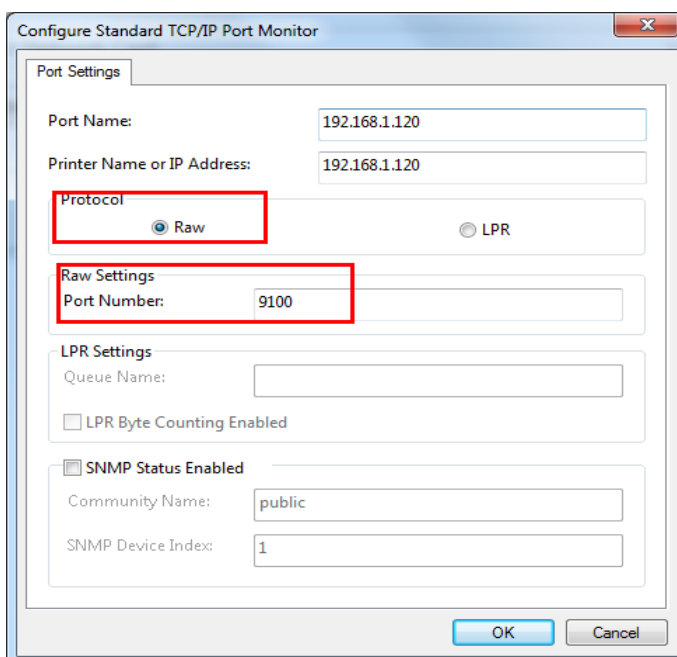
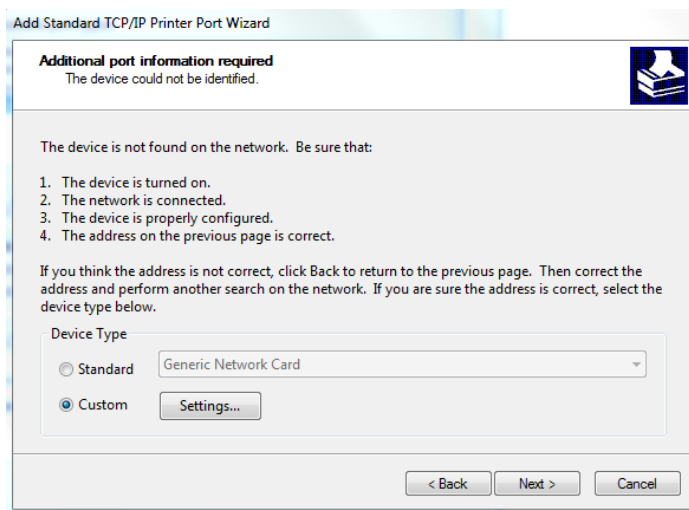
4、 Input Printer IP address, then click next



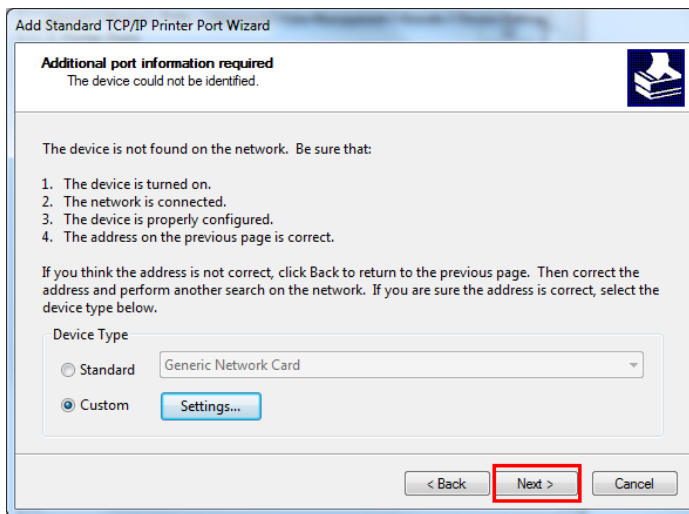
5、 A port is creating, need to wait about 5-10 seconds, as below picture:



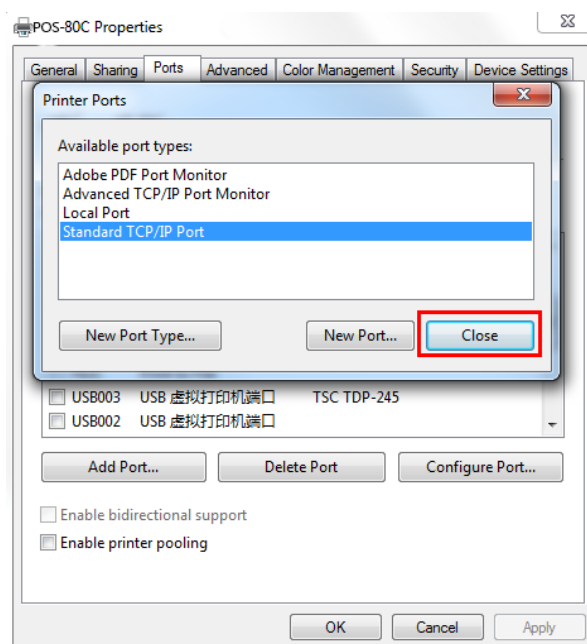
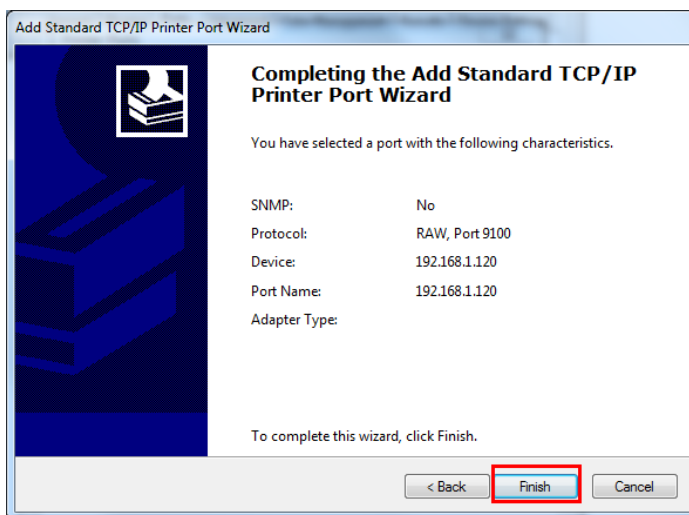
6、 Click Custom--Settings--Protocol Raw/Raw setting: 9100--OK, as below picture



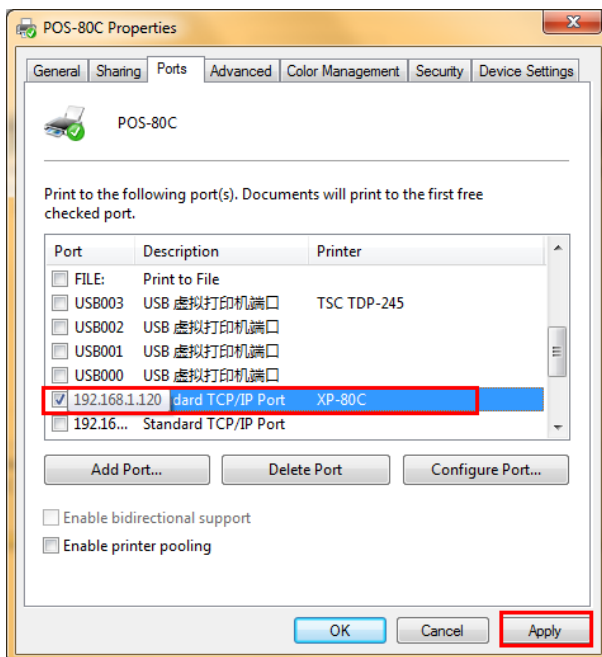
7、 Click " next " button when custom setting is confirmed.



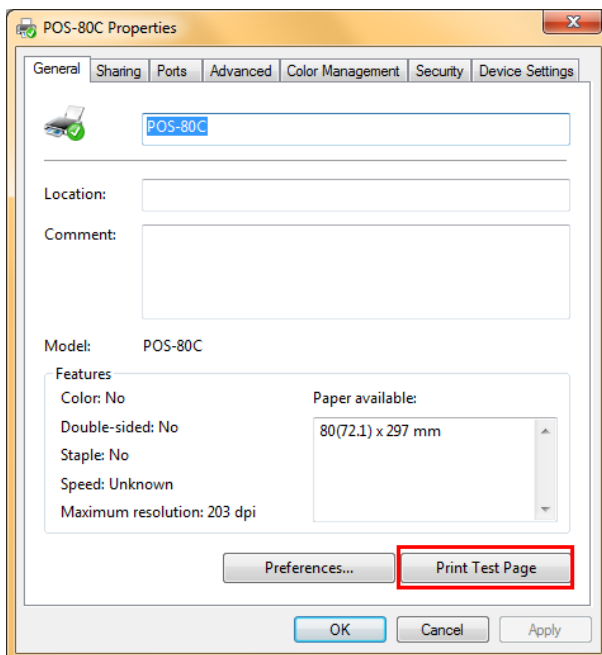
8、 Click Finish, then click close



9、 After completing, A new IP port has generated, Click " Apply" button, As below showed.



10、 Click " General->Print Test Page->OK "button



If the test page prints successfully, that means driver and port added successfully

Thank you for your use
